

QuickGuide

Signing Up for e-Services

Electronic Claims Submission (EDI)

AmeriHealth Caritas Delaware contracts with Change Healthcare — one of the largest electronic data interchange (EDI) clearinghouses in the country — to offer state-of-the-art EDI and other electronic billing services. Electronic claims submission can significantly reduce costs. Claims are processed faster; consequently, payments arrive faster.

You are not required to enroll with Change Healthcare to submit EDI claims to **AmeriHealth Caritas Delaware**. If you already use another EDI vendor to submit claims electronically, inform your vendor of the **AmeriHealth Caritas Delaware** EDI payer ID **77799**. Electronic claim submissions for **AmeriHealth Caritas Delaware** should follow the same process as other electronic submissions that you already submit to other payers. All **AmeriHealth Caritas Delaware** claims will be routed through Change Healthcare by your vendor/clearinghouse, which may be an existing process utilized today by your practice. If you are not already submitting claims to us electronically, the first step is to contact your practice management system vendor, clearinghouse, or Change Healthcare to initiate the process.

Solo practitioners or family practices with up to three physicians who submit 25 or fewer claims a week can submit claims directly to Change Healthcare through WebConnect. WebConnect provides two methods for submitting claims — keying in manually or importing batches of claims. There is no cost to “key in” claims using WebConnect, but there is a one-time set up fee of \$300 to “import” claims via WebConnect. Providers should call **1-877-667-1512** and follow the appropriate prompts or go to [Change Healthcare WebConnect](#) for information on enrolling for direct submission with Change Healthcare. Change Healthcare will also provide information on their various electronic solutions, the requirements for connectivity, and set-up instructions.

Change Healthcare will review and validate the claims for HIPAA compliance and forward them directly to **AmeriHealth Caritas Delaware**. Electronic claims are submitted via the Change Healthcare **AmeriHealth Caritas Delaware** Payer ID **77799**.

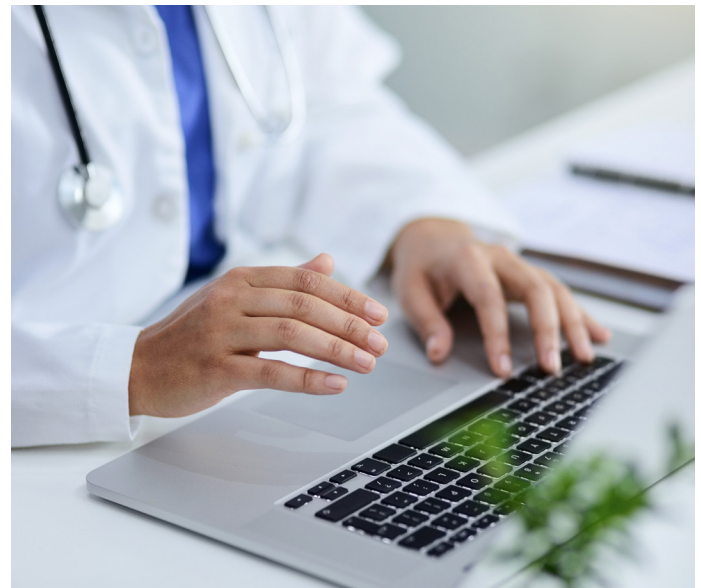
Electronic payments

Change Healthcare is now partnering with ECHO Health Inc. (ECHO), a leading innovator in electronic payment solutions, to offer more electronic payment options and to allow health care providers to process electronic payments more efficiently.

Virtual credit card (VCC)

VCC is a payment option offered by ECHO Health. This new payment system allows your office to receive payment through a virtual credit card (VCC).

If you are not currently registered to receive payments electronically, you will receive VCC payments as your default payment method, instead of paper checks. Your office will receive either faxed or mailed VCC payments, each containing a VCC with a number unique to that payment transaction, your Explanation of Payment /Remittance Advice (EOP/RA), and an instruction page for processing. **Normal transaction fees apply based on your merchant acquirer relationship.** To opt out of this VCC payment method, you can contact ECHO directly at **1-888-492-5579**.



Electronic Funds Transfers (EFT)

Electronic funds transfers allow you to receive your payments by sending them directly to the bank account you designate rather than receiving them by paper check or VCC. If you are new to EFT, you must enroll with ECHO for EFT from **AmeriHealth Caritas Delaware**. When you enroll in EFT, you will automatically receive electronic remittance advices (ERAs) for those payments. All generated ERAs and a detailed explanation of payment for each transaction will be accessible to download from the ECHO provider portal (www.providerpayments.com).

To sign-up to receive EFT from **AmeriHealth Caritas Delaware**, visit <https://enrollments.ECHOhealthinc.com/afterdirect/enroll> **There is no fee for this service.**

To sign up to receive EFT from all of your payers processing payments on the Settlement Advocate platform, visit <https://enrollments.ECHOhealthinc.com>. **A fee for this service may be required.**

Please note: Payment will appear on your bank statement from PNC Bank and ECHO as “PNC — ECHO”.



Electronic Remittance Advice (ERA)

AmeriHealth Caritas Delaware now also offers ERA through Change Healthcare and ECHO. To receive ERA from Change Healthcare and ECHO, you will need to include both the Change Healthcare AmeriHealth Caritas Delaware payer ID and the ECHO payer ID **58379**. Contact your practice management/hospital information system for instructions on how to receive ERAs (also referred to as an 835 file) from **AmeriHealth Caritas Delaware** under Payer ID **77799** and the ECHO Payer ID **58379**.

If your practice management/hospital information system is already set up and can accept ERAs from **AmeriHealth Caritas Delaware**, then it is important to check that the system includes both **AmeriHealth Caritas Delaware** and ECHO Heath Payer ID **58379** for ERAs.

If you are not receiving any payer ERAs, please contact your current practice management/hospital information system vendor to inquire if your software has the ability to process ERAs. Your software vendor is then responsible for contacting Change Healthcare to enroll for ERAs under **77799** and ECHO Health Payer ID **58379**.

If your software does not support ERAs or you continue to reconcile manually, and you would like to start receiving ERAs only, please contact the ECHO Health Enrollment team at **1-888-834-3511**.

For enrollment support please contact ECHO Health Inc. at **1-888-834-3511**.

ACDE-20978311-1

All images are used under license for illustrative purposes only.
Any individual depicted is a model.


AmeriHealth Caritas[™]
Delaware

www.amerhealthcaritasde.com